

Global Monitoring for Environment and Security (GMES)

Joost.van.Bemmelen@esa.int
EOP/GS

Prague, 20 March 2009

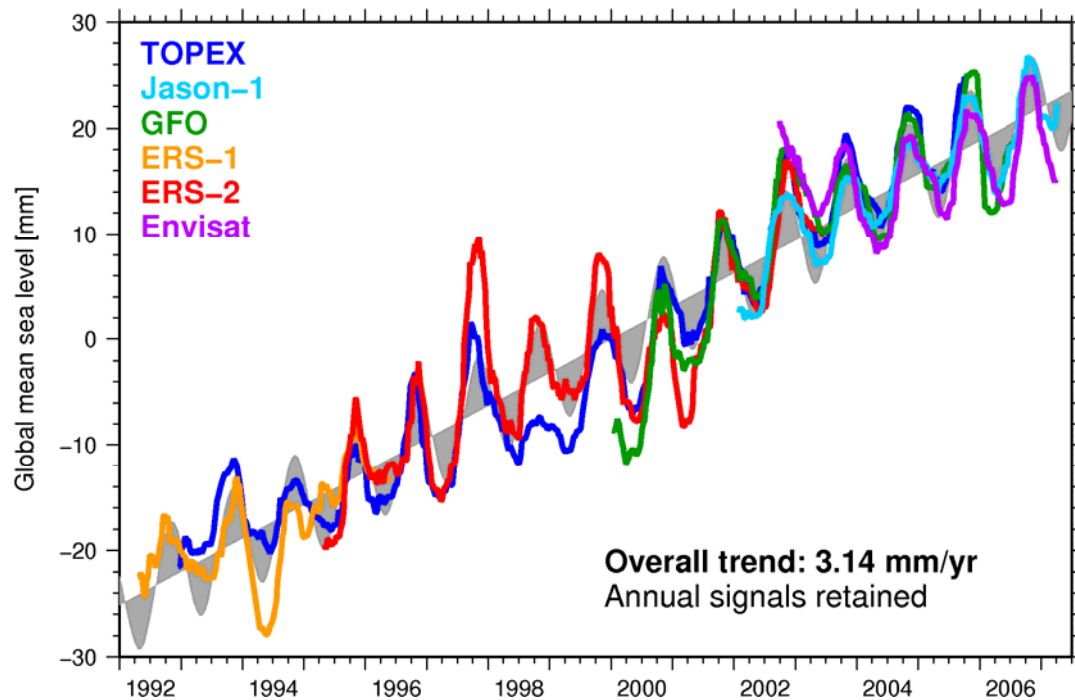
GMES aims at developing operational services,

... following the example of meteorology...



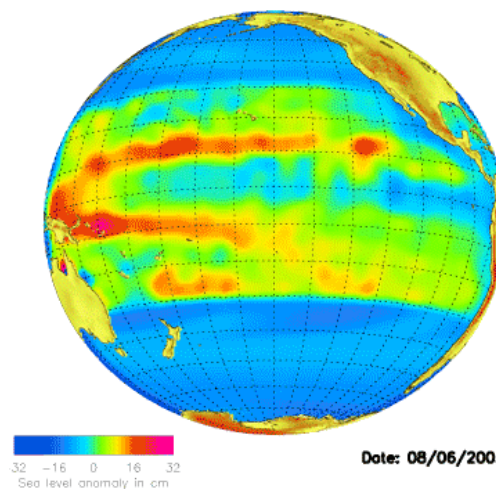
... but for other domains such as emergency management, air quality monitoring, land monitoring, ocean & sea ice monitoring, etc.

Science needed to create and continuously improve operational services



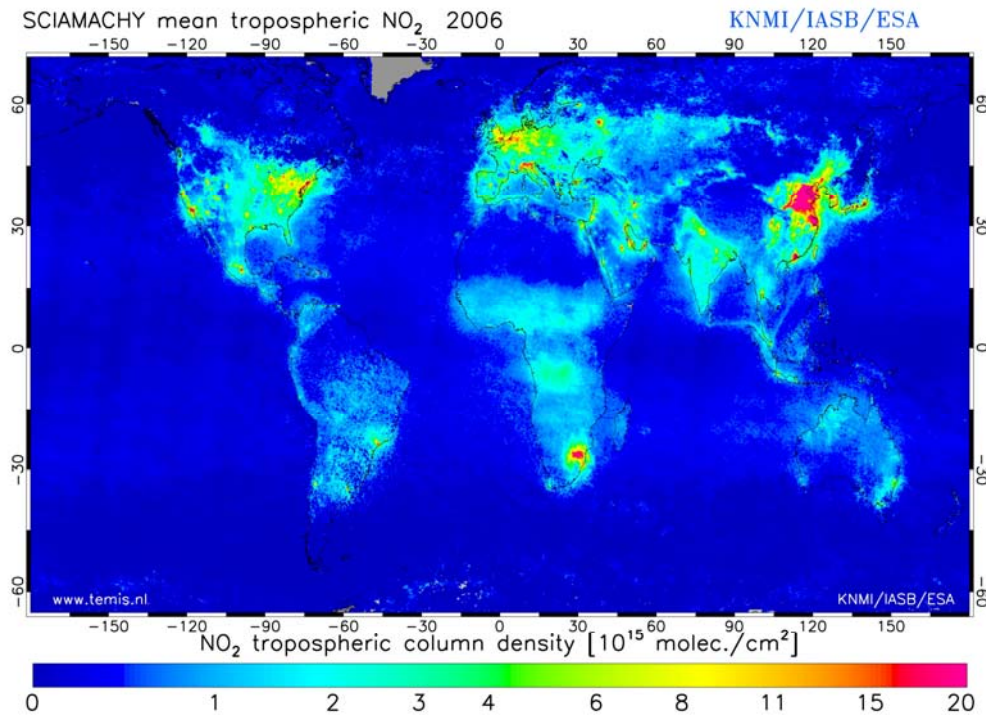
Global sea level change from ERS-1, ERS-2, ENVISAT altimetry
Courtesy of Remko Scharroo Altimetrics LLC, Cornish, NH

Sea Level Anomaly in the Tropical Pacific Ocean

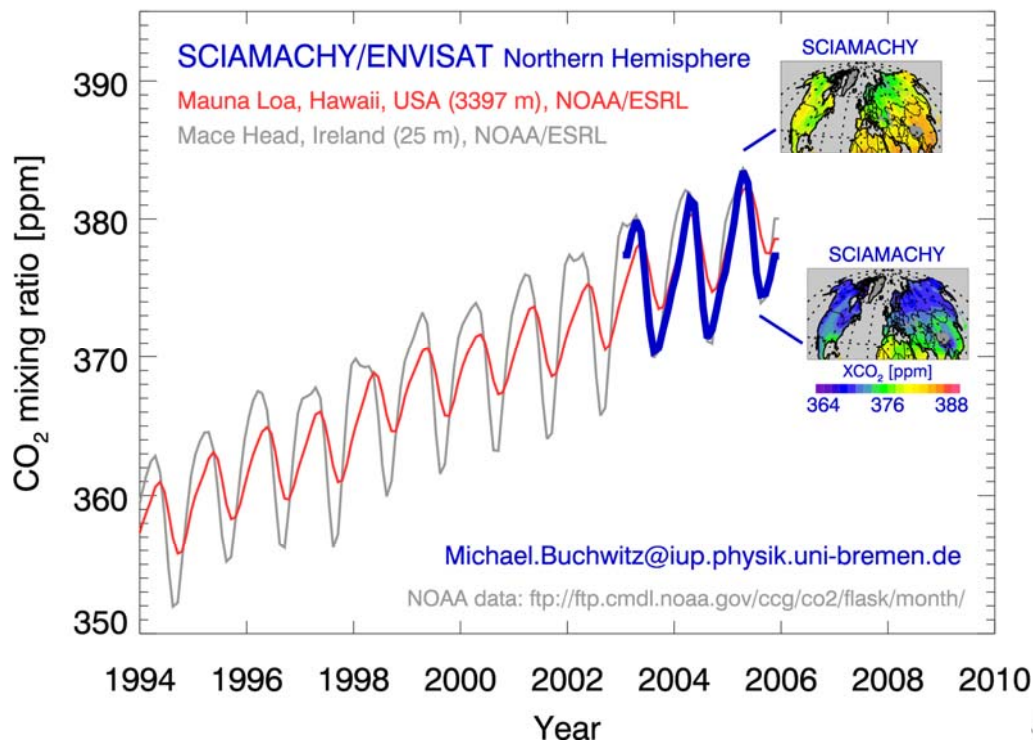


El Niño Southern Oscillation (ENSO) ocean-atmosphere phenomenon from ERS-1, ERS-2, ENVISAT sea level and sea surface temperature measures

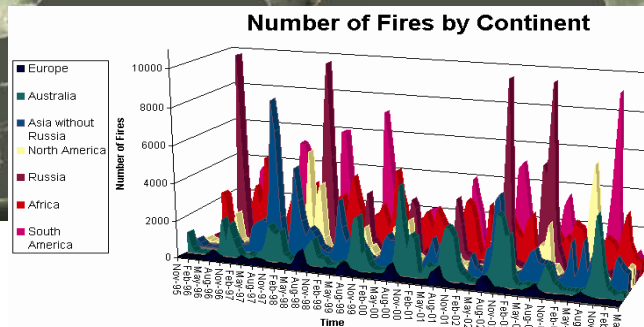
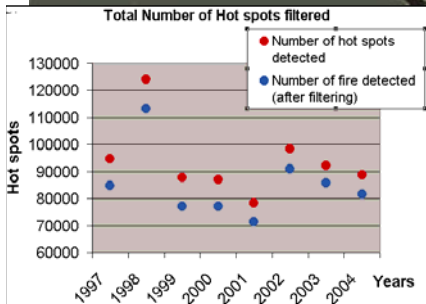
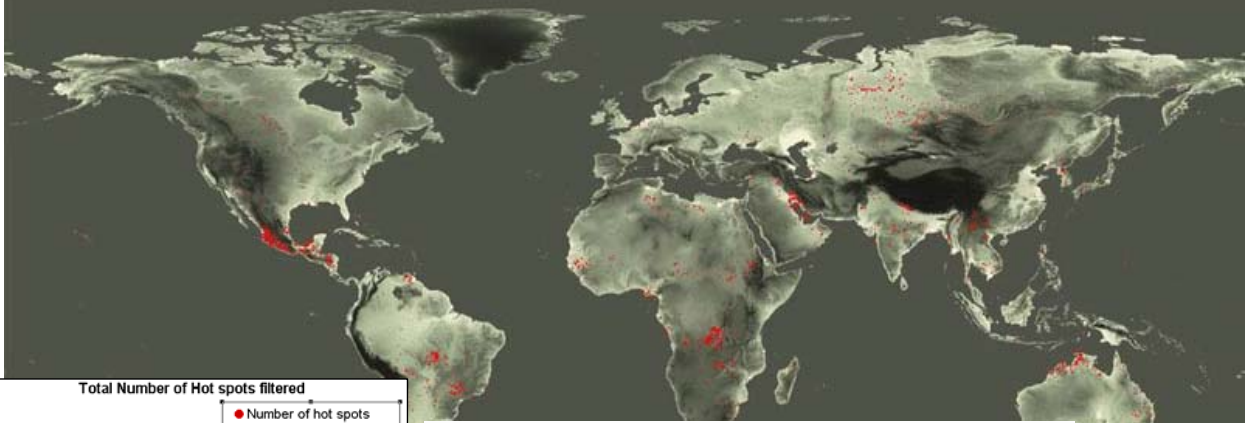
Credits: Delft University, NL and ESA/ESRIN



Atmospheric Carbon Dioxide

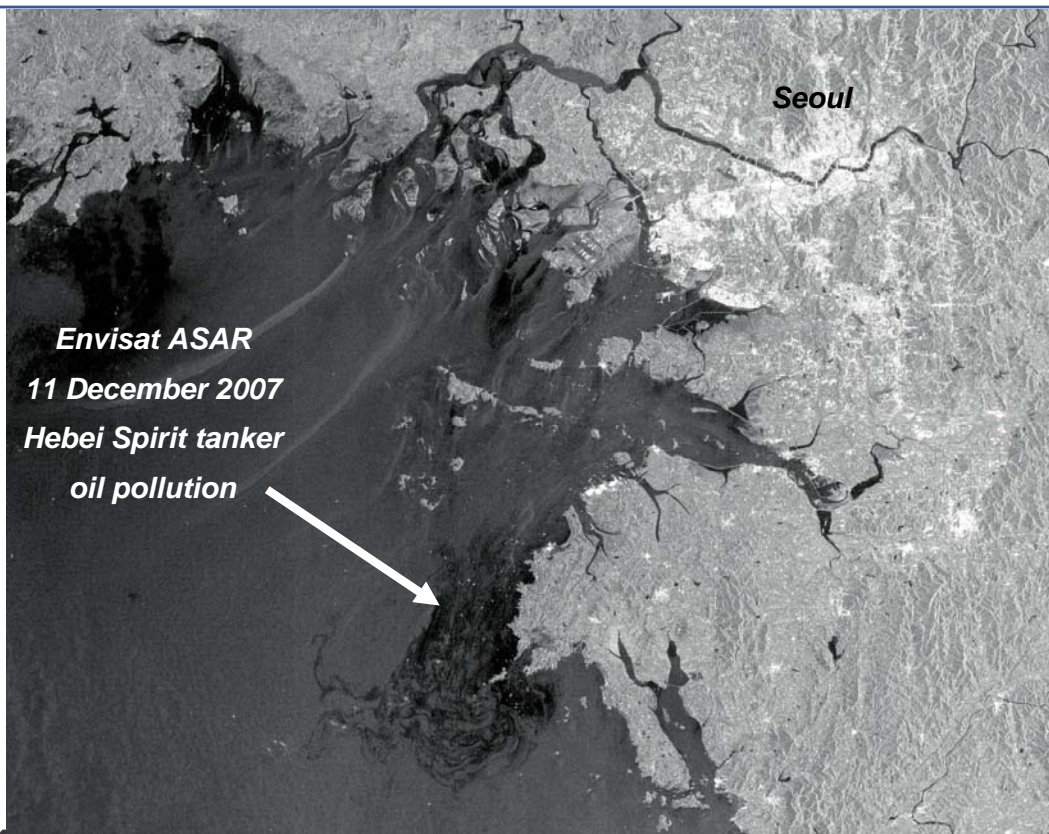


05 - 2005



European Space Agency
Agence spatiale européenne

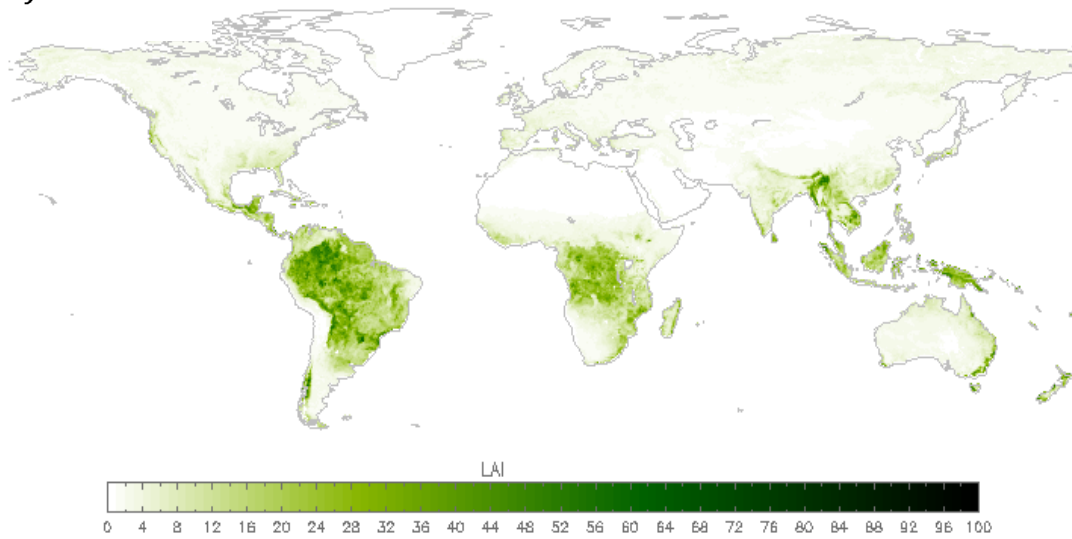
Gmes
European Information Services
for Environment and Security



European Space Agency
Agence spatiale européenne

Gmes
European Information Services
for Environment and Security

January 1999



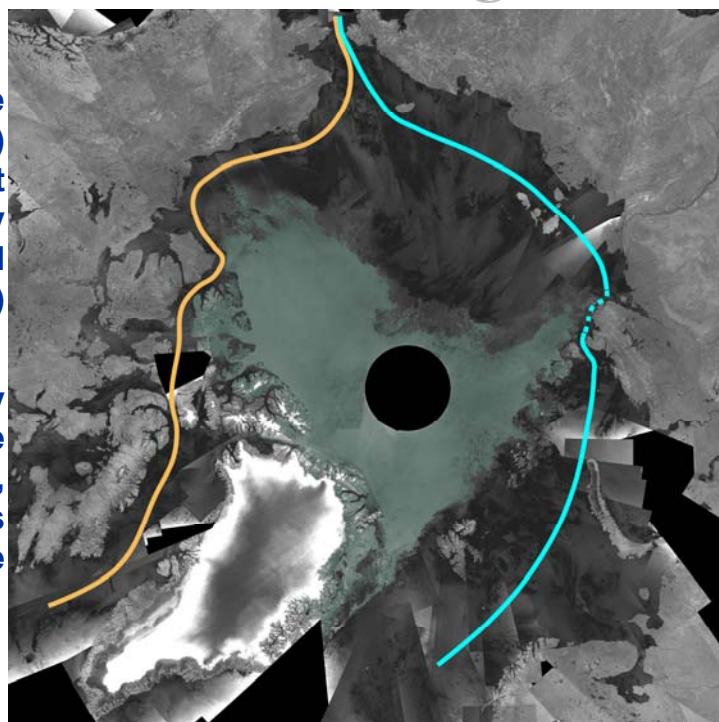
4 years 1999 to 2002 measurements with ATSR-2, AATSR, MERIS, VEGETATION
 Courtesy of Deng, F. et al , 2006, [Algorithm for global leaf area index retrieval using satellite imagery](#),
 IEEE Transactions on Geoscience and Remote Sensing, 44(8), 2219-2229.

Lowest Arctic ice coverage in history

Northwest Passage
 open (orange line)
 and Northeast
 passage only
 partially blocked
 (blue line)

Dark grey
 represents ice-free
 areas,
 green represents
 areas with sea ice

Envisat ASAR
 mosaic 09/2007



1998	Initiation of GMES, Baveno Manifesto
2000	Gothenburg EU Summit “establish by 2008 an operational European capacity for ... GMES”
2001+	Investments by ESA and EC on services
2005	EU initiates “Fast-track” services; GMES becomes ‘flagship’ ESA C-MIN in Berlin funds Phase-1 of GSC programme
2007	ESA Phase-2 approved
2008	EC-ESA agreement on GMES signed EC Fast-Track services to become operational ESA C-MIN in November - GSC Segment-2
2011+	Launch of first GMES Sentinels

Services Component

- Produces information services in response to European policy priorities in environment and security
- Relies on data from in-situ and space component

In-situ component

- Mostly of national responsibility, with coordination at European level

Space Component

- EO missions developed specifically for GMES (Sentinels)
- EO missions built for purposes other than GMES but offering part of their capacity to GMES (EU/ESA MSs, EUMETSAT, commercial, international)

Services Component

- Produces information services in response to European policy priorities in environment and security
- Relies on data from in-situ and space component

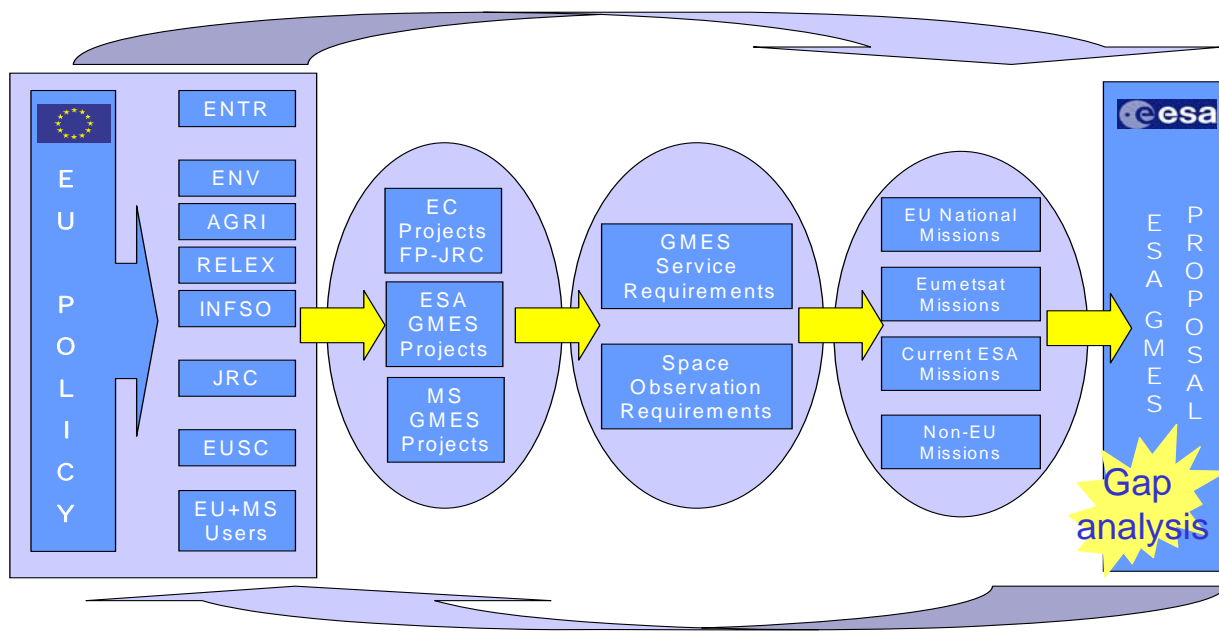
In-situ component

- Mostly of national responsibility, with coordination at European level

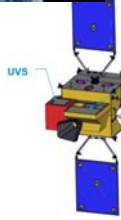
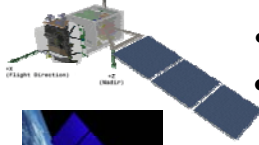
Space Component – role of ESA as

- development agency for dedicated infrastructure
- coordinator of contributions from Member States, EUMETSAT, private and commercial partners

From EU policies to the GSC Sentinels and Data Access requirements



POLICIES → USERS → SERVICES → REQUIREMENTS → GAP ANALYSIS → SOLUTIONS



European Space Agency
Agence spatiale européenne

- **Sentinel 1 – SAR imaging**
- All weather, day/night applications, interferometry
- **Sentinel 2 – Multispectral imaging**
- Land applications: urban, forest, agriculture, etc
Continuity of Landsat, SPOT data
- **Sentinel 3 – Ocean and global land monitoring**
- Wide-swath ocean color, vegetation, sea/land surface temperature, altimetry
- **Sentinel 4 – Geostationary atmospheric**
- Atmospheric composition monitoring, trans-boundary pollution
- **Sentinel 5 – Low-orbit atmospheric**
- Atmospheric composition monitoring



2011



2012



2012



2019+



Sentinel-1: C-band SAR mission



Applications:

- monitoring sea ice zones and the arctic environment
- surveillance of marine environment
- monitoring land surface motion risks
- mapping in support of humanitarian aid in crisis situations

4 nominal operation modes:

- strip map (80 km swath, 5X5 m res.)
- interferometric wide swath (250 km swath, 20X5 m res.)
- extra wide swath (400 km swath, 25X100 m res.)
- Wave (5X20 m res.)

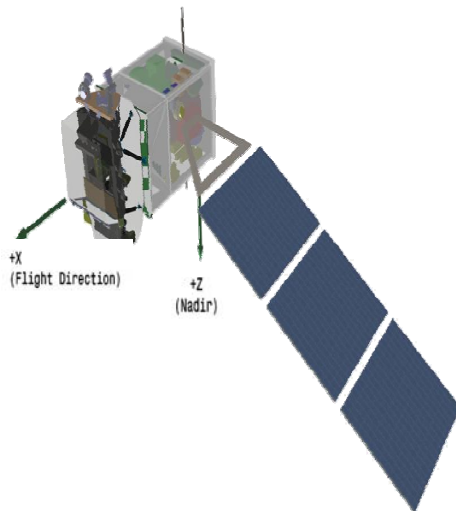
2300 Kg spacecraft mass

Sun synchronous orbit at 693 Km mean altitude

12 days repeat cycle

7 years design life time, consumables for 12 years

Sentinel-2: Superspectral imaging mission



European Space Agency
Agence spatiale européenne

Applications:

- Generic land cover maps
- risk mapping and fast images for disaster relief
- generation of leaf coverage, leaf chlorophyll content and leaf water content

Pushbroom filter based multi spectral imager with 13 spectral bands (VNIR & SWIR)

Spatial resolution: 10, 20 and 60 m

Field of view: 290 km

1098 kg spacecraft mass

10 days repeat cycle

Sun synchronous orbit at 786 km mean altitude

7 years design life time, consumables for 12 years



Sentinel-3: ocean & global land mission



European Space Agency
Agence spatiale européenne

Applications:

- Sea/land colour data and surface temperature
- sea surface and land ice topography
- coastal zones, inland water and sea ice topography
- vegetation products

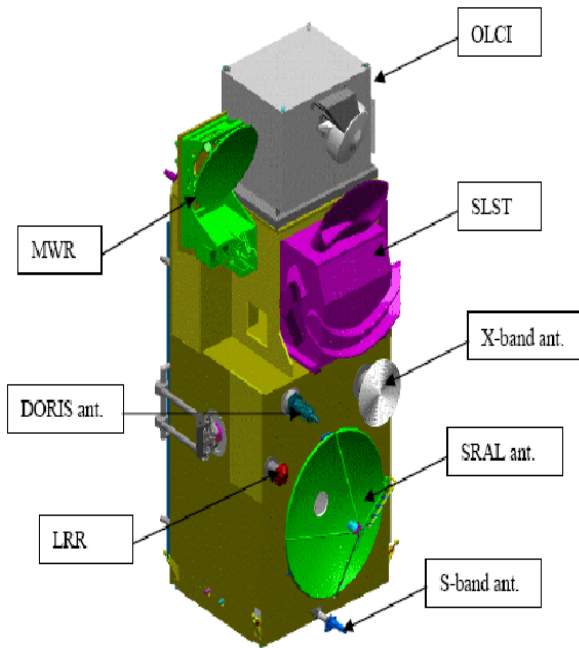
1198 kg spacecraft mass

Sun synchronous orbit at 814.5 km mean altitude over geoid

27 days repeat cycle

7 years design life time, consumables for 12 years

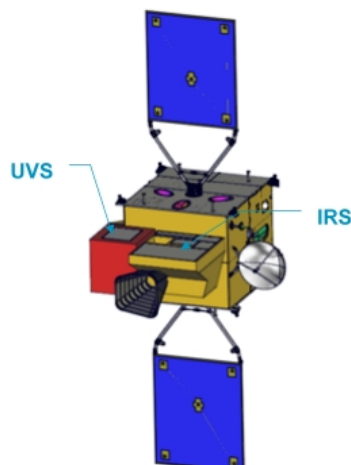




Instruments:

- **Ocean and Land Colour Instrument (OLCI)** with 5 cameras, 8 bands (only VIS) for open ocean (low res), 15 bands (only VIS) for coastal zones (high res). Spatial sampling: 300m @ SSP
- **Sea and Land Surface Temperature (SLST)** with 9 spectral bands, 0.5 (VIS, SWIR) to 1 km res (MWIR, TIR). Swath: 180rpm dual view scan, nadir & backwards
- **RA package**
SRAL Ku-C altimeter (LRM and SAR measurement modes), MWR, POD (with Laser Retro Reflector, GNSS and DORIS)

Sentinel-4: GEO atmospheric mission



Applications:

- monitoring changes in the atmospheric composition (e.g. ozone, NO₂, SO₂, BrO, formaldehyde and aerosol) at high temporal resolution
- tropospheric variability

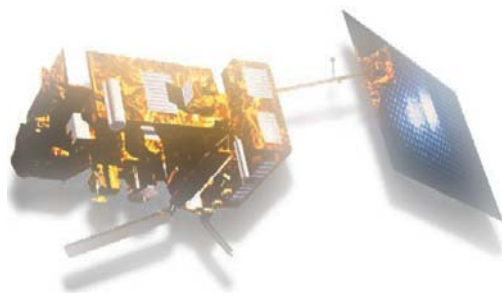
Narrow field spectrometer covering UV (290-400 nm), visible (400-500 nm) and near-IR (750-775 nm) bands

Spatial sampling 5-50 km and spectral resolution between 0.06 nm and 1 nm (depending on band)

Geostationary orbit, at 0° longitude

Embarked on MTG-S and operated by EUMETSAT

Sentinel-5: LEO atmospheric mission



European Space Agency
Agence spatiale européenne

Applications:

- monitoring changes in the atmospheric composition (e.g. ozone, NO₂, SO₂, BrO, formaldehyde and aerosol) at high temporal (daily) resolution
- tropospheric variability

Wide-swath pushbroom spectrometer suite, covering UV (270-400 nm), visible (400-500 & 710-750 nm), NIR (750-775 nm) and SWIR (2305-2385 nm) bands.

Spatial sampling 5-50 km and spectral resolution between 0.05 nm and 1 nm (depending on band)

Low Earth orbit (reference altitude of about 817 km)

Sentinel-5 precursor to fill data gaps (2013-2019). Sentinel-5 embarked on post-EPS and operated by EUMETSAT

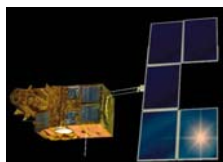


Potential contributions to GMES Space Component

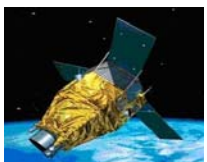
National, Eumetsat and Third Party Missions for GMES (list not exhaustive)



CosmoSkymed



SPOT



Pléiades



Jason



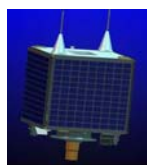
Radarsat



Terrasar-X



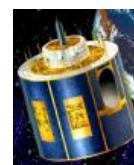
Rapideye



DMCs



METOP

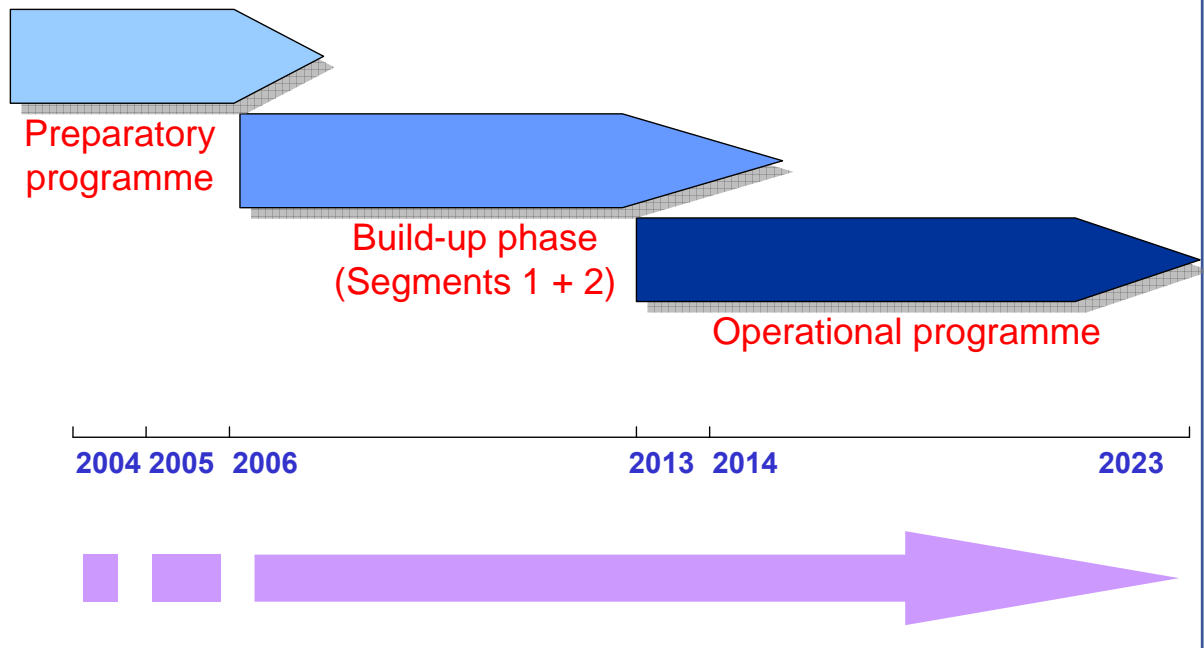


MSG

+ Seosat, Tandem-X, Enmap, Venµs, Altika, etc.

European Space Agency
Agence spatiale européenne





1. Build-up phase

development of first generation of Sentinels, data access to MS/EUM missions, ground segment, early operations: ~ 2.4 bn€

Financing – ESA GSC programme

- 758 M€ Segment 1 (CMIN 2005)
- ~ 800-900 M€ Segment 2 (CMIN 2008)

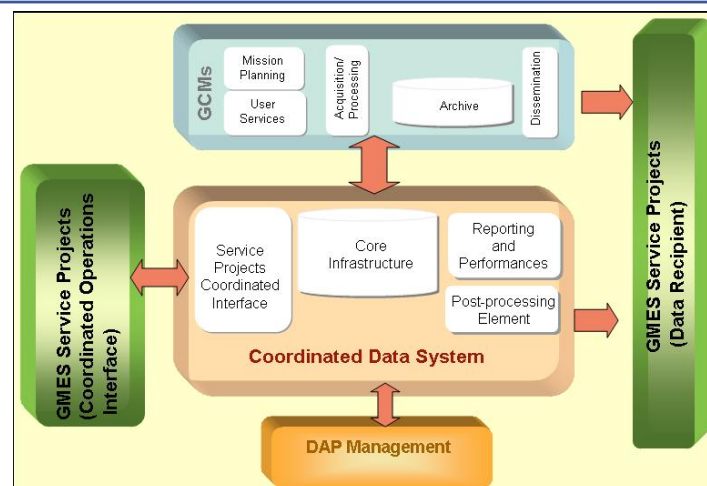
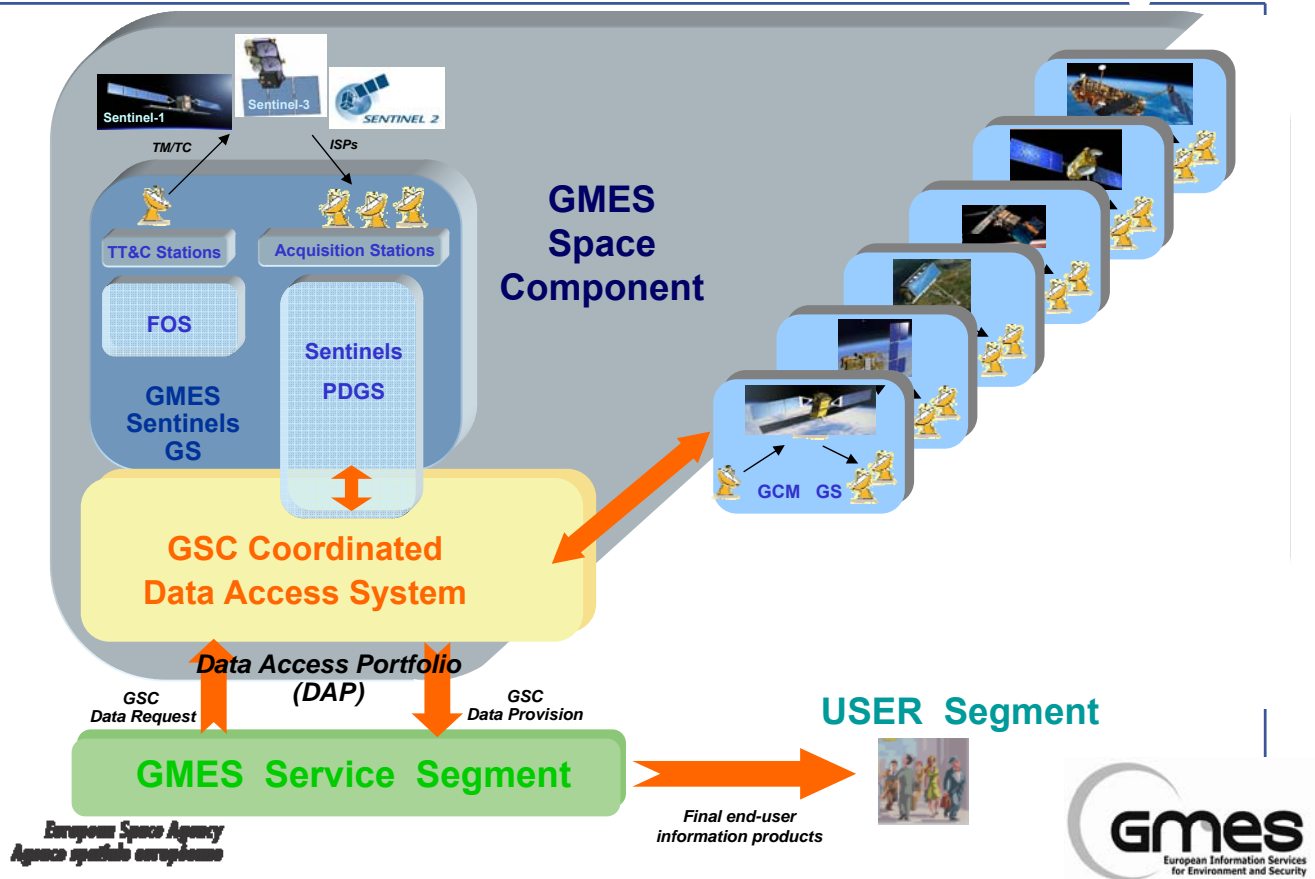
Financing – EC FP7

- 48 M€ FP7 Space (2007-2013) grant
- 624 M€ FP7 Space (2007-2013) ESA – EC agreement

Additional funding is required in ~2011 to complete build-up

2. Operational Programme

development of recurrent Sentinel satellites, operational access to MS / EUM missions, GSC routine operations, evolution of GSC: ~ 450-500 M€/year (2008 e.c.), to be consolidated



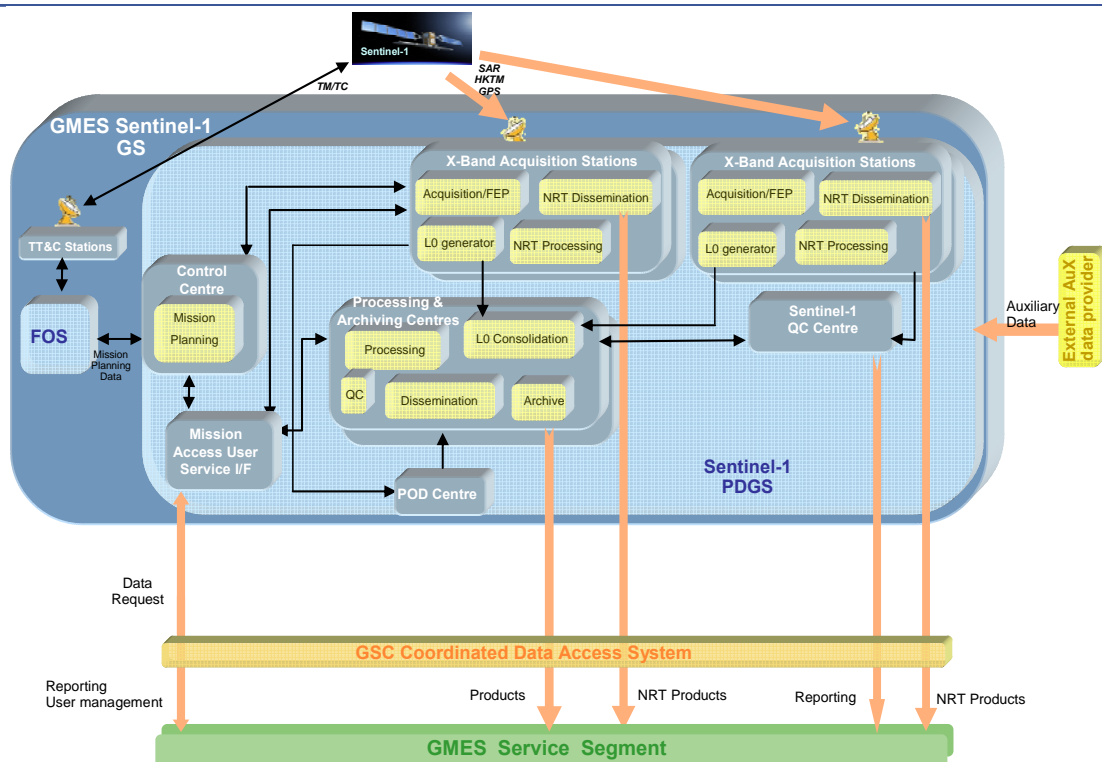
Coordinated Data Access System components:

Service Projects Coordinated Interface:

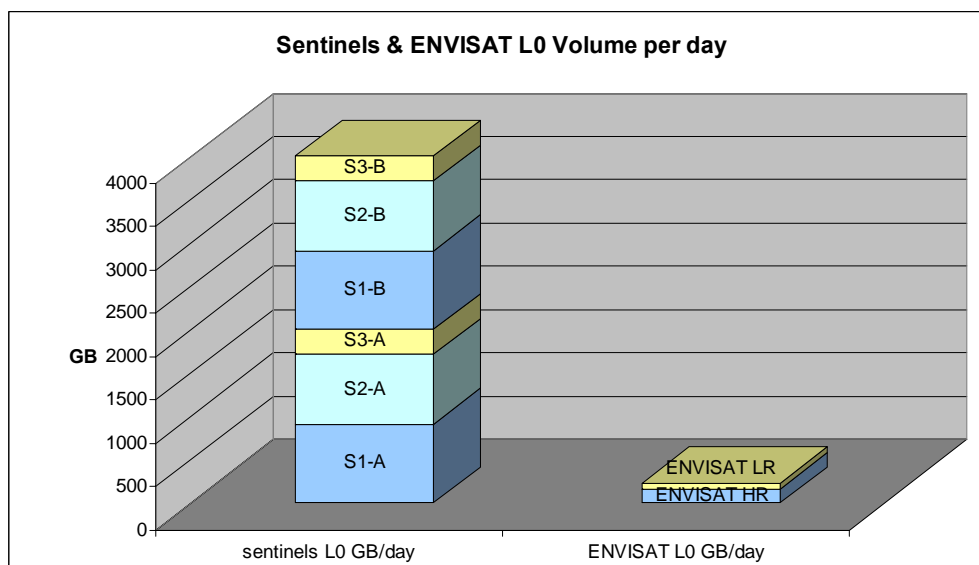
- Service Projects interface for data sets and operations advertisement, user management, data ordering interface
- Data set production coordination
- GCMs interface for mission production coordination

Core Infrastructure: Products collection and cataloguing for data sets creation

Reporting and performance: Overall performance continuous measurement

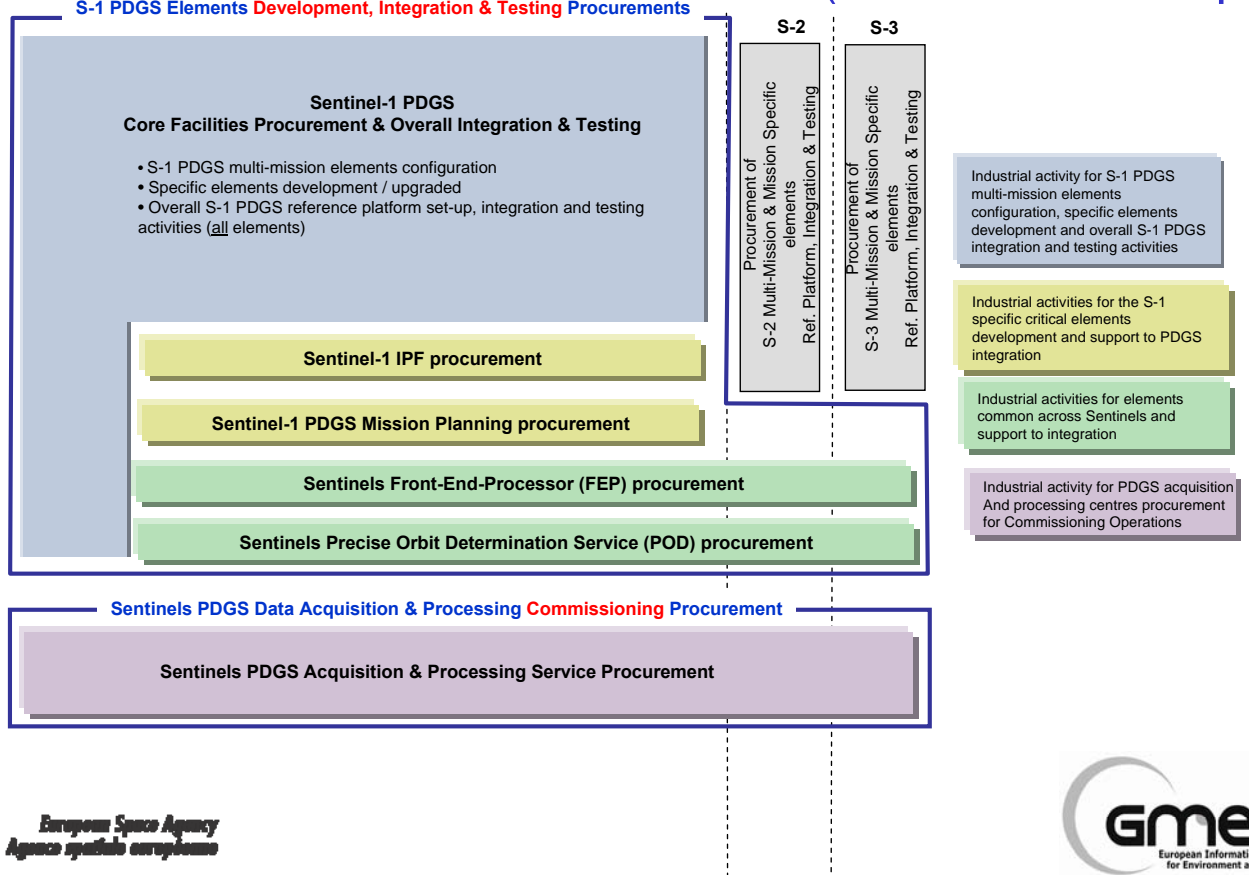


In terms of acquired data volume, the Sentinels Missions represent an increase of a factor 18 compared to the most demanding ESA EO mission (ENVISAT).



Sentinels X-Band downlink rate 260 Mbps per channel, with two independent downlink channels.

S-1 PDGS Elements Development, Integration & Testing Procurements



Currently foreseen for May 2009

**Industry Day at ESA-ESRIN
Frascati (RM) – Italy**

**Sentinels PDGS Procurement
Approach**

Thank you